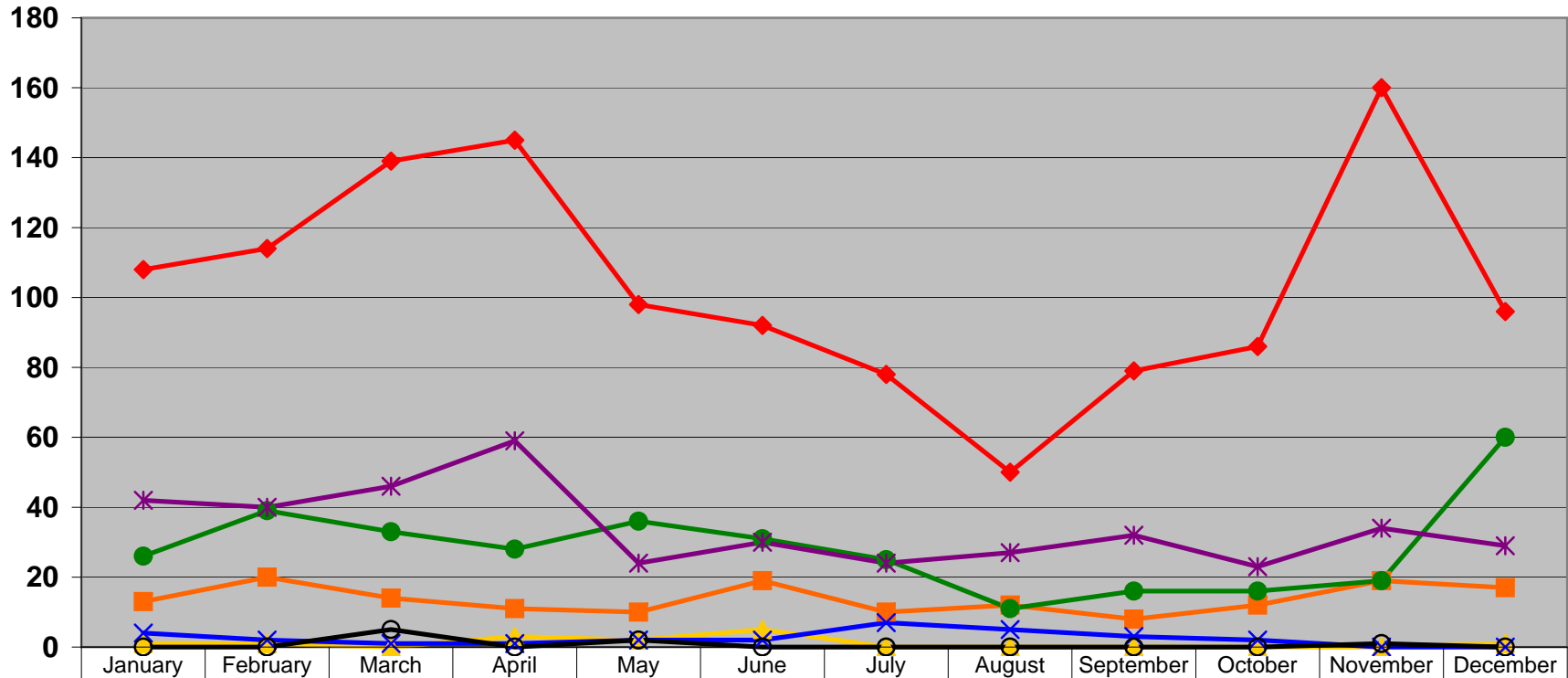


**Department of Mental Health
Number of Seclusion Episodes by Month and Facility
2011**



	January	February	March	April	May	June	July	August	September	October	November	December
◆ ASH	108	114	139	145	98	92	78	50	79	86	160	96
■ CSH	13	20	14	11	10	19	10	12	8	12	19	17
▲ MSH	1	1	0	3	2	5	0	0	0	0	0	1
● NSH	26	39	33	28	36	31	25	11	16	16	19	60
× PSH	4	2	1	1	2	2	7	5	3	2	0	0
* SVPP	42	40	46	59	24	30	24	27	32	23	34	29
○ VPP	0	0	5	0	2	0	0	0	0	0	1	0