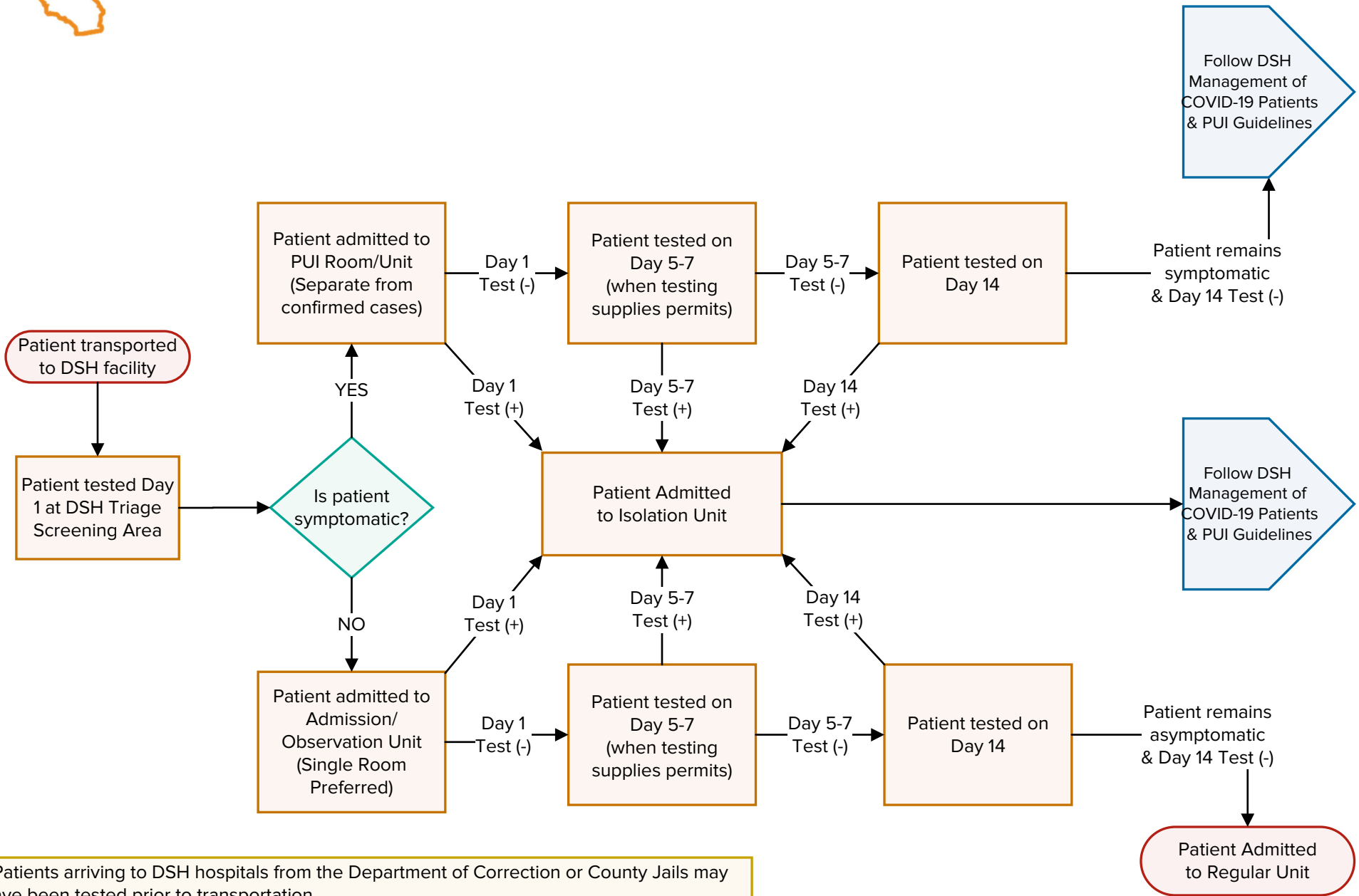




COVID-19 ADMISSION & SERIAL TESTING



- Patients arriving to DSH hospitals from the Department of Correction or County Jails may have been tested prior to transportation
- Patients are admitted as cohort/groups and are housed together during sequestration/observation period. One cohort is assigned to only one admission observation unit.
- Anytime a patient presents as symptomatic they are admitted to PUI unit
- Anytime a patient tests positive for COVID19 they are admitted to the Isolation Unit